



Australian Government

Job Access

Driving disability employment

The JobAccess Service

DEA Leaders Forum
November 2016

www.JobAccess.gov.au



Australian Government

Job Access

Driving disability employment


**The national hub for
workplace and employment
information for people with
disability, employers and
service providers**

www.JobAccess.gov.au




The JobAccess Website

[Login](#) [Home](#) [About Us](#) [News & Media](#) [Complaints & Report Abuse](#) [Contacts](#) [1800 464 800](#)

 **Job Access**
Driving disability employment

[Access for People with Disability](#) | [Access for Employers](#) | [Access for Service Providers](#)




JobAccess is the national hub for workplace and employment information for people with disability, employers and service providers.

[Learn more >](#)


How can we help you?

☐




Access for People with Disability

JobAccess is here to help people with disability find and keep jobs, get promoted to better jobs, upgrade or expand their workplace skills, and more.



Access for Employers

One in five Australians lives with disability. This represents a vast pool of talent, which employers can tap into to enhance workplace diversity and overcome labour shortages.



Access for Service Providers

Service providers play a vital role in matching people with disability to jobs. JobAccess supports this process by providing a range of resources.

The JobAccess Website Information Sheets

Job Access
Driving disability employment

Are you a young person with disability looking for work?



There are free services available that can help you as you complete school, training or higher education and move into a job. These include:

- Disability Employment Services**
Disability Employment Services help eligible young people with disability, injury or health condition to find and keep a job.
- Community Development Programme**
The Community Development Programme can help you if you live in a remote part of Australia and you are looking for work.
- Transition to Work**
If you are aged between 15 and 21 years then you may be able to get help through Transition to Work. Transition to Work can help you get ready for work through training on workplace behaviours and expectations in the workplace as well as developing skills for work and study.
- Vocational, Training & Employment Centres**
If you are a young Indigenous jobseeker with disability and you are looking for a job, Vocational, Training & Employment Centres can help you.
- Apprenticeships and Traineeships**
You might be interested in an apprenticeship or traineeship as a way to gain qualification and get a job.

 Australian Government
JobAccess is the national hub for workplace and employment information for people with disability, employers and service providers.
1800 464 800
www.jobaccess.gov.au
Are you a young person with disability looking for work V.1.0

Job Access
Driving disability employment

Available services and programmes for employers

There are many services and programmes available to employers to employ and retain people with disability in their workplaces. These include:

National Disability Coordination Officers can link schools and government employment assistance, and improve pathways between education and work.

Supported Wage System allows you to match an appropriate wage with the productivity of an employed person with disability. It is also available for current employees whose jobs may be at risk due to a reduced capacity to work.



Disabled Australian Apprenticeship Wage Support provides a payment to employers of eligible Australian Apprentices with disability.

Work Based Personal Assistance helps pay the costs of workplace support services for people who need regular help due to their disability or medical condition.

Mobility Allowance can help if you have an employee who has a medical report to say they are unable to use public transport.

National Work Experience Programme can provide an opportunity for you to see how people with disability operate in your work environment, and how they are able to perform different work tasks.

Community Development Programme can help find people in remote Australia—including those with disability—to suit your business needs.

 Australian Government
JobAccess is the national hub for workplace and employment information for people with disability, employers and service providers.
1800 464 800
www.jobaccess.gov.au
Available services and programmes for employers V.1.0
1804.00.10

Job Access
Driving disability employment


Funding available for people with disability

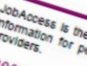
As a person with disability, you may be able to access the Employment Assistance Fund to pay for workplace modifications and equipment that you need to do your job.

The Employment Assistance Fund can also be used to pay for assistance that you might need to find and prepare for work.

Some of the things the Employment Assistance Fund can be used to pay for are:

- workplace modifications and equipment, such as assistive technology, electronic and communications technology equipment
- communication equipment
- Interpreting (Australian Sign Language) interpreting
- computer software and software upgrades
- tailored support and training packages
- modifications to work motor vehicles; and
- support for people with mental health conditions or learning disorders.



 Australian Government
JobAccess is the national hub for workplace and employment information for people with disability, employers and service providers.
1800 464 800
www.jobaccess.gov.au
Funding available for people with disability V.1.0
1801.00.10

The JobAccess Advice Service

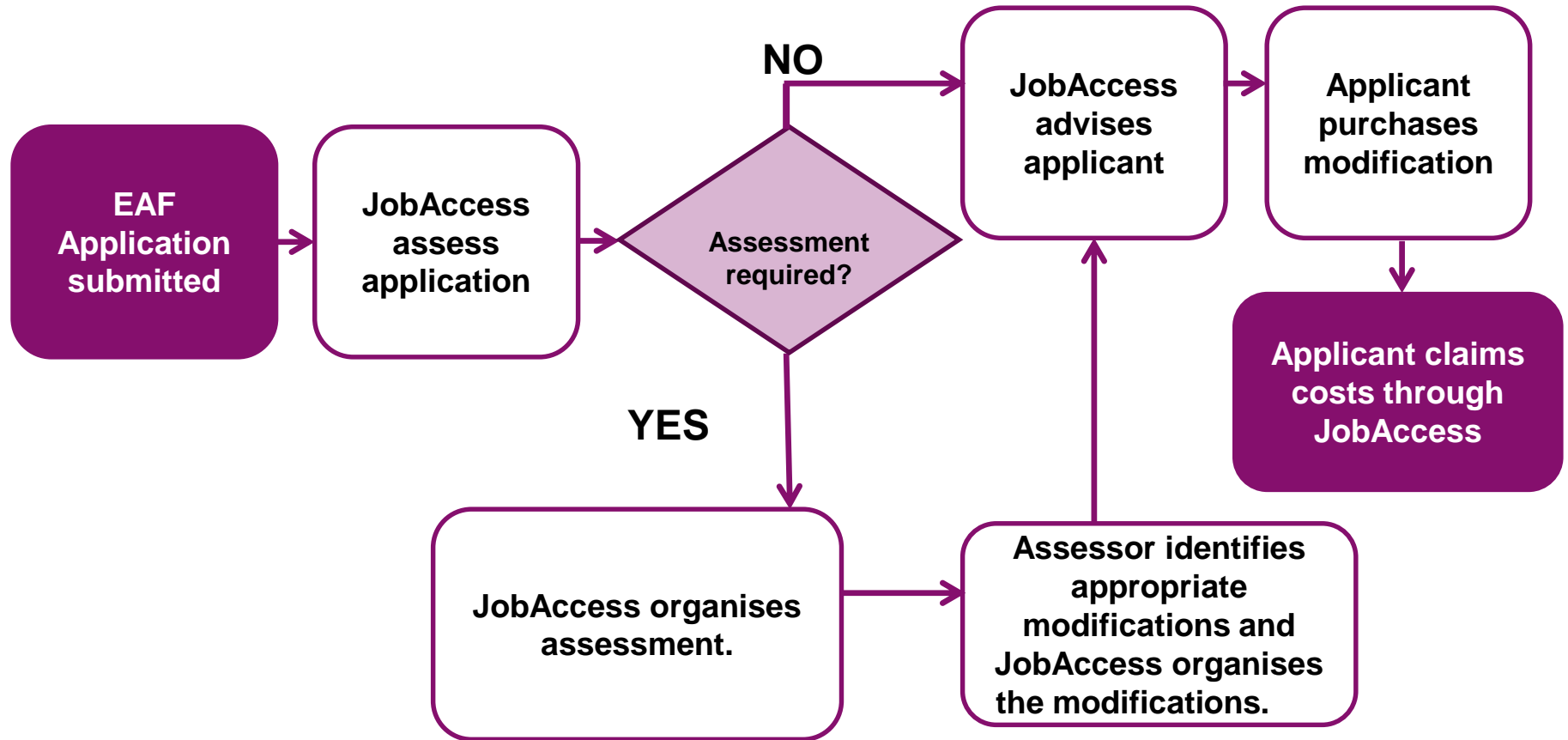
- **Free, confidential, expert advice from allied health professionals.**
- **Specialists in workplace adjustment, occupational therapy, vocational training, recruitment strategies for the sustainable employment of people with disability and mental illness.**
- **Accessible via 1800 464 800, TTY 1800 555 677, or national relay service website and app and email enquiry service.**
- **CALD and NESB callers can contact via the Translating and Interpreting service on 13 14 50.**

The Employment Assistance Fund



The Employment Assistance Fund

Who can apply and what is the process?



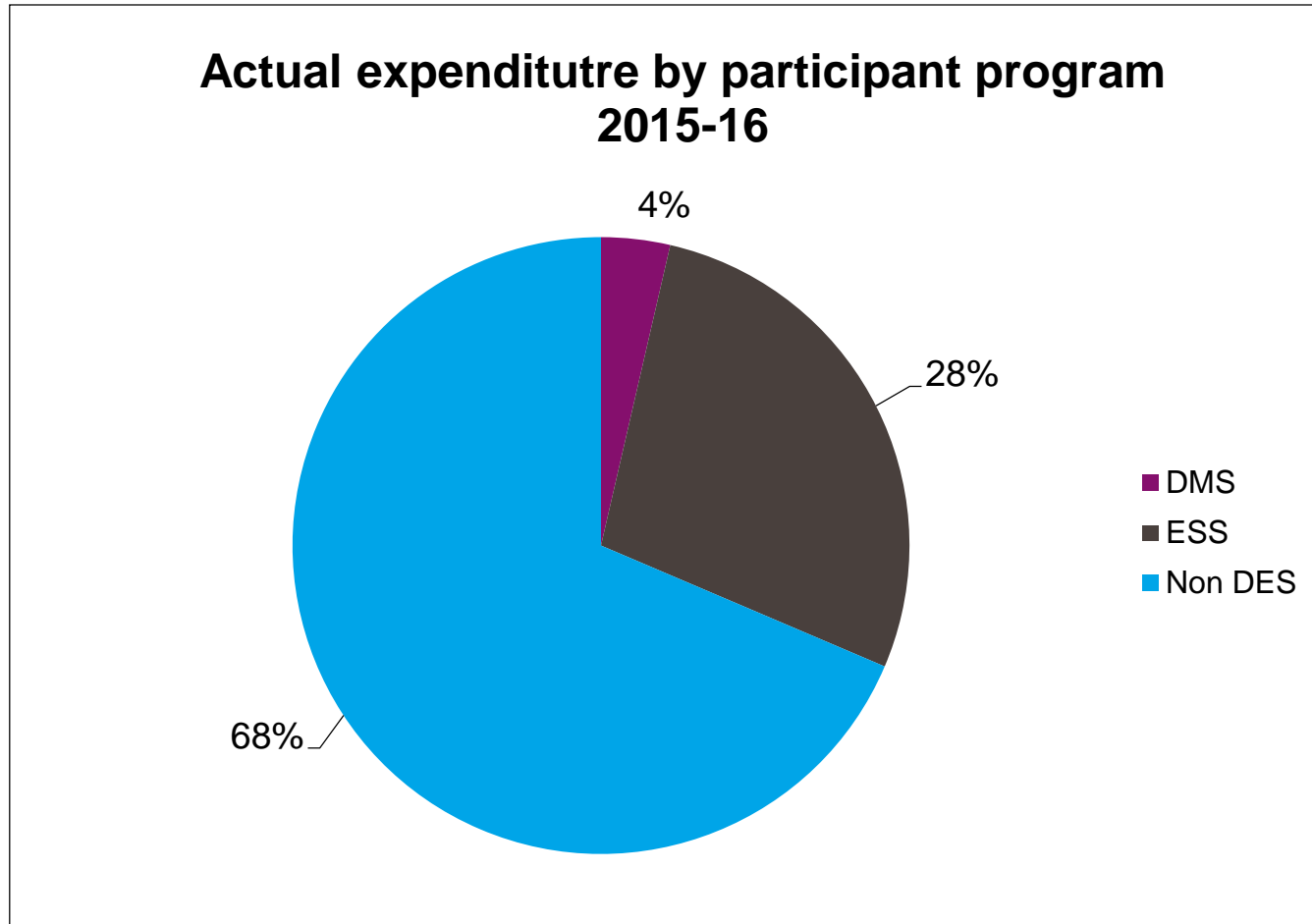
The Employment Assistance Fund

Usage: July 2015 – July 2016

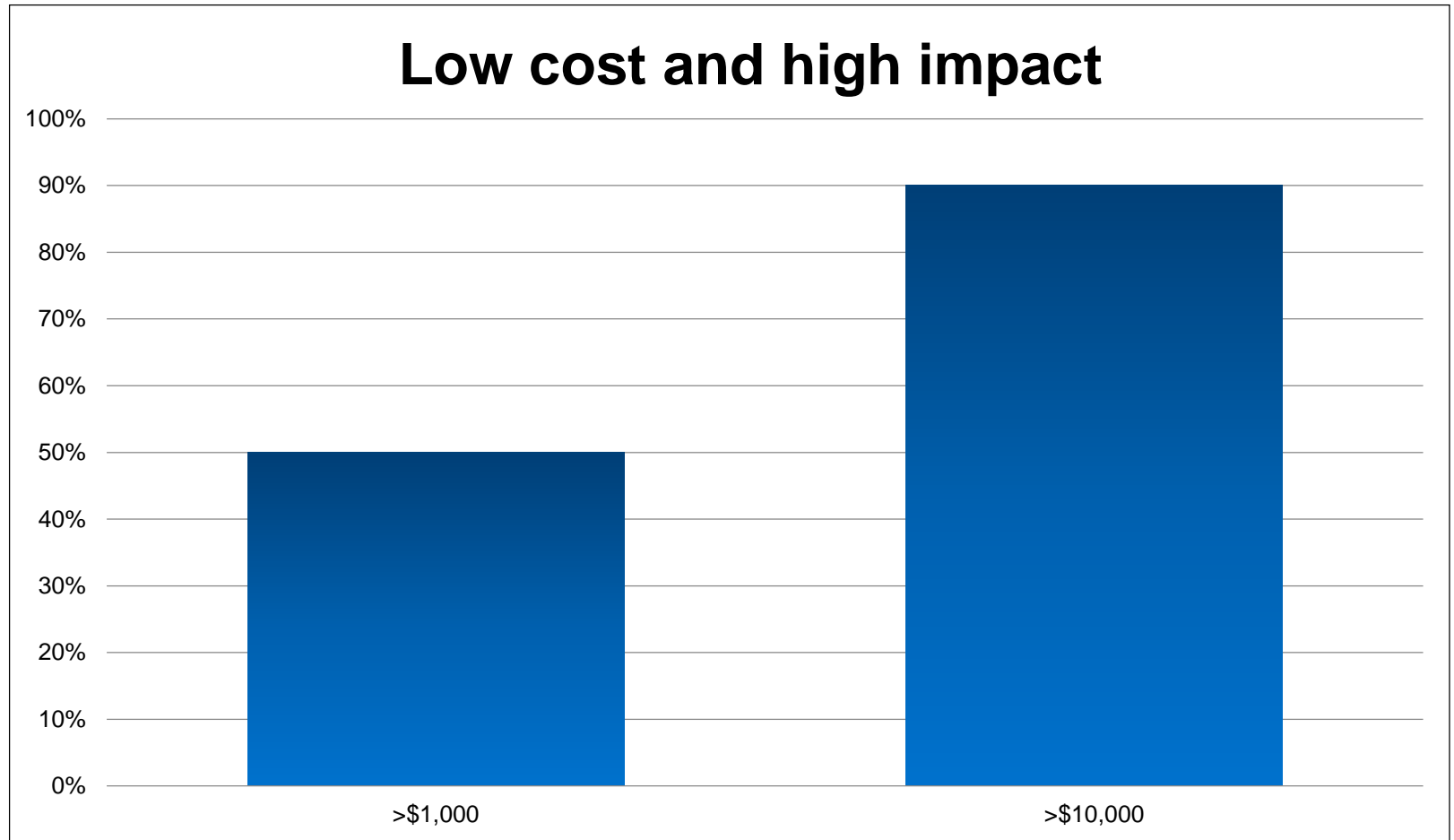
- **Total funding - \$10.25m**
- **Number of people approved for assistance - 2,605**



The Employment Assistance Fund



The Employment Assistance Fund



The Employment Assistance Fund

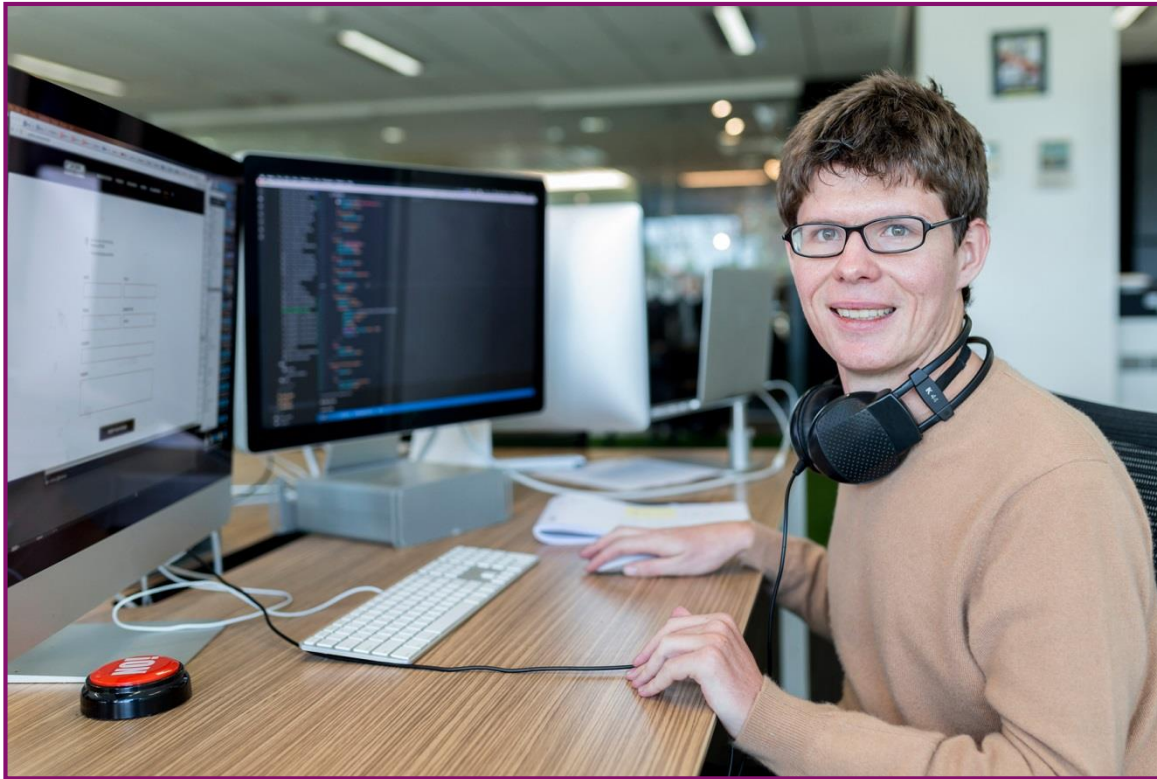
- **The cost of making adjustments to a physical workplace**
- **Modifications to work vehicles**
- **Special equipment for the workplace**
- **Information and communication devices**
- **Auslan interpreting**
- **Specialist services for employees with specific learning disorders and mental health conditions**
- **Disability awareness training**
- **Deafness awareness training; and**
- **Mental health awareness training**

JobAccess Employer Engagement

The National Disability Recruitment Coordinator (NDRC)



Complaints Resolution and Referral Service (CRRS) 1800 880 052



The National Disability Abuse and Neglect Hotline - 1800 880 052

**National access for the
reporting of abuse and
neglect of people with
disability**



Questions?



Thank you

Helen Green

Director – Disability Employment Services
Support Programs and Employer Engagement
jobaccadmin@dss.gov.au



Australian Government

Job Access

Driving disability employment

www.JobAccess.gov.au